



Accurately Weighing Africa



HOPPER SCALE

ENSURING HIGHLY ACCURATE
WEIGHT DISCHARGES



HS-24-01

SMART SUPPORT
0861 422 134
OR +27 83 680 0722
E-mail: info@sascoafrica.com
Web: www.sascoafrica.com
24 hours, 7 Days a week

SASCO WEIGHING SYSTEMS

GROUP SUPPORT H/O
2 Blackburn Street
Apex Industrial | Benoni

Phone: +27 (0) 11 746 6000
Fax: +27 (0) 11 746 6100

SASCO HOPPER SCALES are sometimes referred to as non-automatic throughput weighers. Industries such as agriculture, food processing, mining, and construction commonly use hopper scales to weigh materials during the manufacturing process. This ensures that the appropriate amount of material is being used and helps to monitor inventory levels.

Hopper scales are also employed in batching and blending processes to guarantee the exact amounts of different materials are processed in mixing, creating products that meet required specifications.

While hopper scales are usually used in non-trade weighing check applications, Sasco has approved several hopper scale designs specifically for trade weighing purposes. To attain exceptional accuracy, the components of the hopper scale must be constructed and designed to the highest specifications.

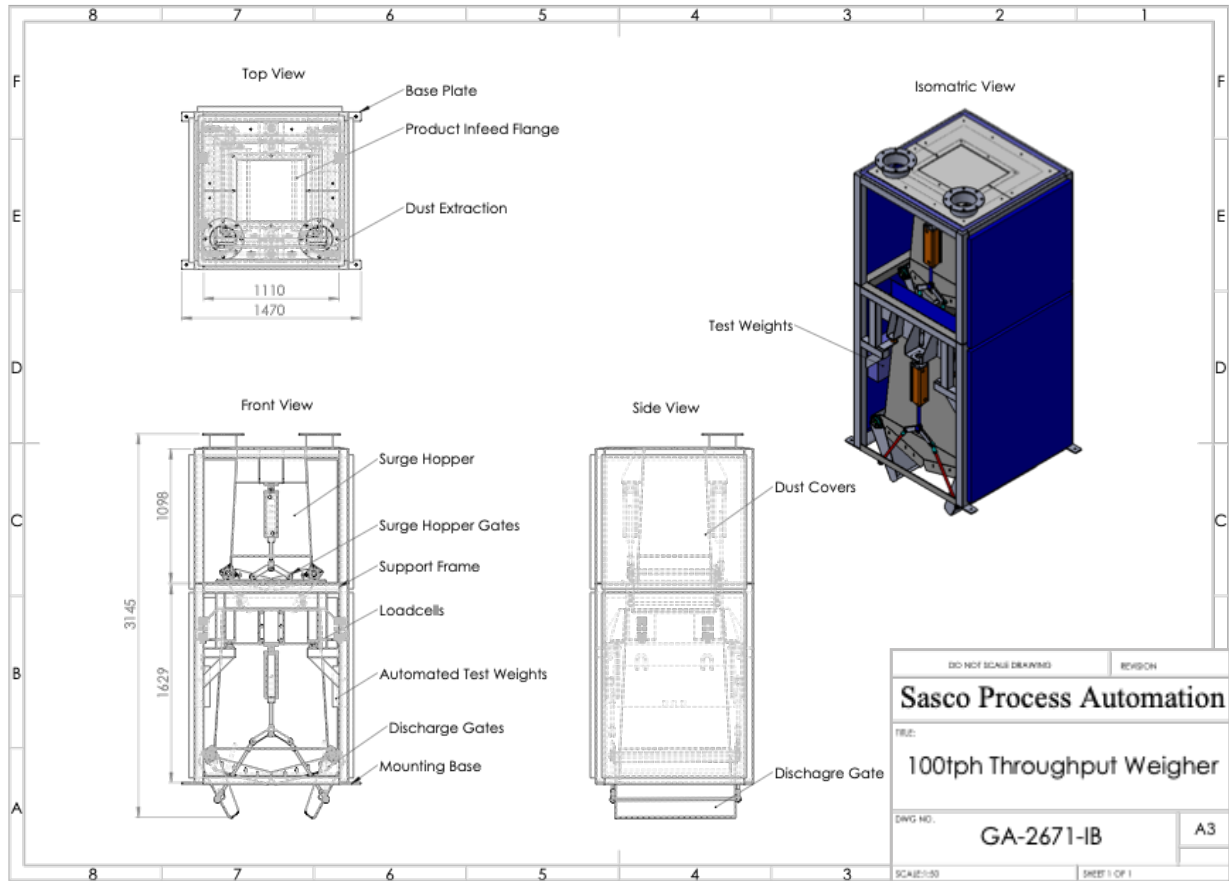


HOPPER SCALE SUPPLIED BY SASCO

Product Overview

SASCO HOPPER SCALES have the following key component options, which are reflected in our range of standard weighing products.

Hopper Scale Mechanical Overview





Key Components

Sasco's hopper scale are robust, reliable and accurate because:

- **Hopper Bin:** These are specifically designed for the type of product being weighed. Normally these bins are made of high-quality stainless steel, however with products that are “resistant to flowing” Teflon coating is often added to the bin surface.
- **Load Cells:** Only proven OIML certified load cells are used.
- **Weighing Indicator:** Only reliable indicators are used and the selection depends on whether the hopper scales are to be used for trade purposes or only check weighing.
- **Mounting Assembly:** These are always made of steel and are designed to be capable of withstanding impacts, vibrations, and other factors that can affect its accuracy and reliability.

Standard Products

Sasco's Hopper Scale range comprises both bespoke products and the following standard base ranges:

PRODUCT NUMBER	HS-100 (TP)	HS – 100 (NTP)
Controller Options	 <p>L137</p>	 <p>PW-100</p>
Applications	Standalone throughput weigher with basic reporting to a printer	Standalone throughput weigher with basic reporting to a printer
Solid Weighers	50L, 100L, 400L 100L	50L, 100L, 400L 100L

Controller Features Comparison

	PW 100 Controller	IT 1 Controller
Display	6-digit 7-segment LED + 8 LEDs + LCD	11cm/4.3" TFT colour screen
Display Type	7-segment + mono-colour Graphic LCD	Colour Graphic LCD
Mounting	Wall	Panel, Wall, Desk
Key Pads	20-key Alphanumeric membrane keyboard	5-key Sealed membrane keypad
Built in Web Server	No	Optional
IP Rating	IP65 (according to LoadTec Docs)	IP69K
Digital Filter	Moving average digital filter with programmable input step detection	Not specified
Input Power	90-260 VAC or 10-30 VDC	110-240 VAC or 12-30 VDC
Load Cells Operated	8 Loadcells	8 load cells
Scales Operated	1	1
Memory	SD memory stick	Optional to record 1,000,000 weighing results
Configurable Set Points	Depend on the application	2
I/O Digital Channels	6 in & 6 out	4 (2 in, 2 out / 1 in, 3 out)
Analog In/Out	One analog output as standard	None
Standard Comms	RS232	RS232, Ethernet
Communication Options	Optional RS232, RS485, USB, Ethernet, RF	Selectable optional USB, Ethernet, RS232 or RS485
Ticket Formats	Fixed	Standard formats with limited used defined fields
Approvals	No Approvals	EN 45501 OIML R 76-1 EN 61000-6-2 EN 61000-6-3 NAMUR NE21 EN 62368-1 WELMEC 8.8
Applications	Loadcell transmitter Loss-in-weight controller Through-put weigher Bag filling Batch weigher Dynamometer	Floor and bench scales Counting scales Check weighing Filling Mobile scales

Application Example

HOPPER SCALE

Company A is a newly formed Agri Farmers Co-Op that built a grain silo to store and then redistribute grain grown by its farmers.

In bound grain delivered by farmers using tractors and trailers. The Co-Op has one in bound 18m weighbridge which is used to record deliveries of farmers grain.

The grain is then bought by a large food group that uses interlink trucks to collect the grain. These trucks are two long to fit on the 18m weighbridge and the Co-Op does not want outbound trucks to use the same entrance as the farmers who are delivering grain.



With a lack of space at the gate entrance for an additional weighbridge at the present entrance, and the cost of building a new weighbridge office at the exit gate plus the added cost of the weighbridge the additional weighbridge, the optimal cost effective solution was to weigh all out bound grain on a trade approved hopper scale, and thus enable the loaded trucks to depart through the existing outbound security gate.

SMART SUPPORT

0861 422 134

OR +27 83 680 0722

E-mail: info@sascoafrica.com

Web: www.sascoafrica.com

24 hours, 7 Days a week

This brochure contains a general guide of the product only and shall not form part of any contract unless specifically agreed by Sasco Africa in writing in each case on the Order Acknowledgement. The specification of the product described herein may vary from time to time and may be altered without notice.

LOCAL SUPPORT AGENT

